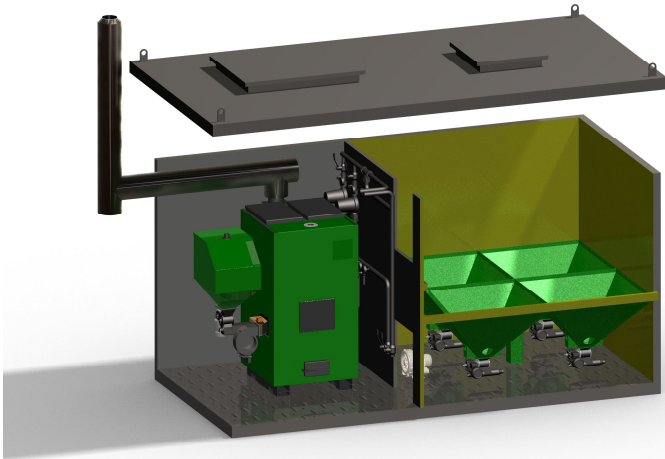


Biomass Boiler House



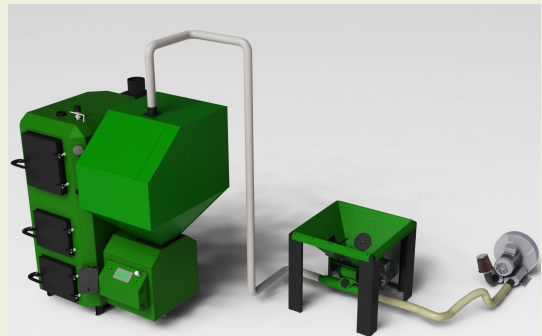
Features

- Burns wood or grass pellets.
- Complete systems including pellet hoppers, pneumatic feed systems & flue.
- Hot water (boiler) configuration.
- Hot air (space heating) system also available.
- Easy & quick install, portable, flexible.
- Ideal also for temporary heating.
- Automatic ash removal for low maintenance.
- Proven design with over 3000 boilers in operation over 15 years.

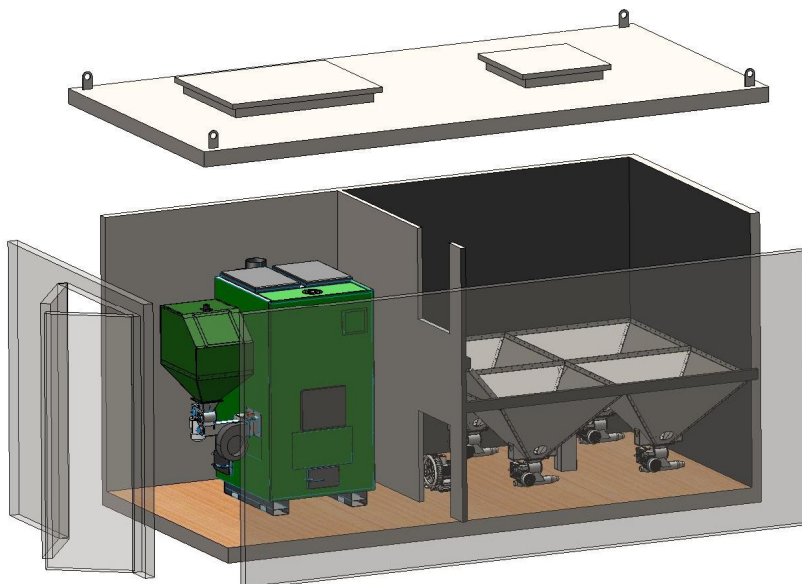
Modular system

The NDK modular boiler house is a cost-effective answer for anyone wishing to install biomass heating cheaply and quickly.

The units come as a complete system, ready to install and use. Installation and commissioning is done by qualified engineers with the minimum of fuss.



Pneumatic pellet feeder



NDK Limited
The Barn,
Henley Corner,
Langport,
Somerset,
TA10 9BH,
England